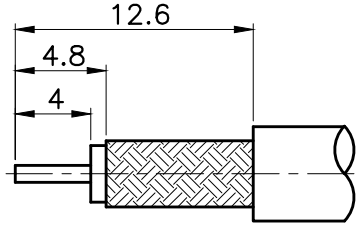


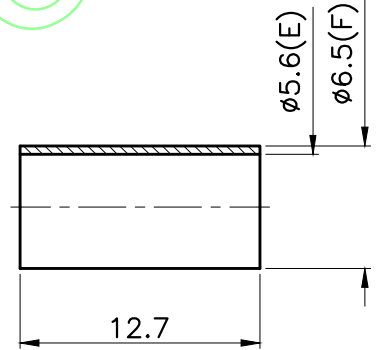
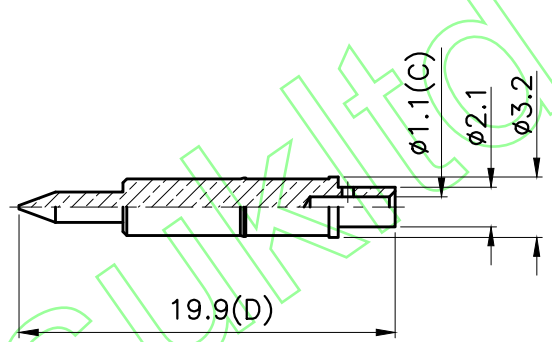
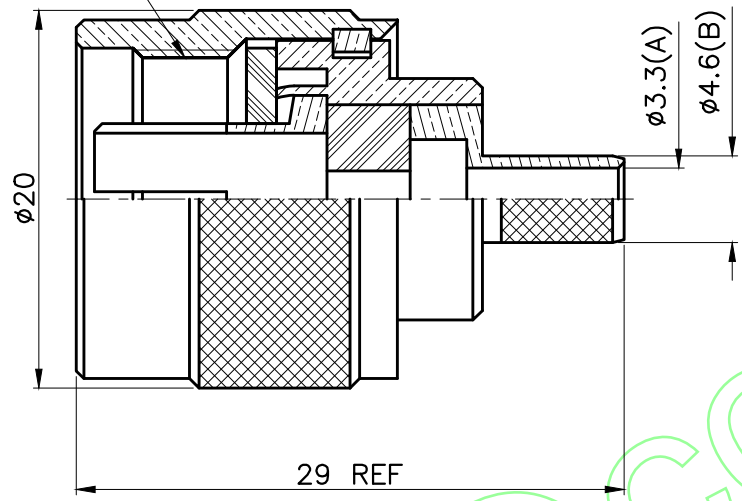
REVISIONS	
DESCRIPTION	DATE

RoHS COMPLIANT

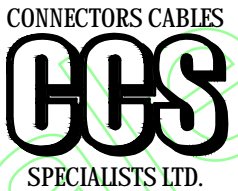


RECOMMENDED
CABLE STRIPPING DIM'S

5/8-24UNEF-2B



1. CRIMPED FERRULE
HEX CRIMP SIZE .213"
2. CRIMPED CONTACT PIN
HEX CRIMP SIZE .068"



TITLE: N MALE CRIMP (FOR RG58)		APRD:	UNLESS OTHERWISE SPECIFIED TOLERANCES 0.5-6 = ±0.2 >6-30 = ±0.4 >30-120 = ±0.6 >120-315 = ±1 >315-1000 = ±1.6 ANGLES = ±5°	FERRULE	BRASS	NICKEL
PART NO: NPCR58	029	CHKD:		CONTACT PIN	BRASS	GOLD
DRAWING NO:		DR:		SHELL	BRASS	NICKEL
DATE: 05/08/19"		UNIT: mm	C RING	BRASS	NONE	
SCALE: 2.5/1			GASKET	RUBBER	RED	
			BODY	BRASS	NICKEL	
			BODY	BRASS	NICKEL	
			INSULATOR	TEFLON	WHITE	
			BODY	BRASS	NICKEL	
			NO. DESCRIPTION	MATERIAL	FINISH	